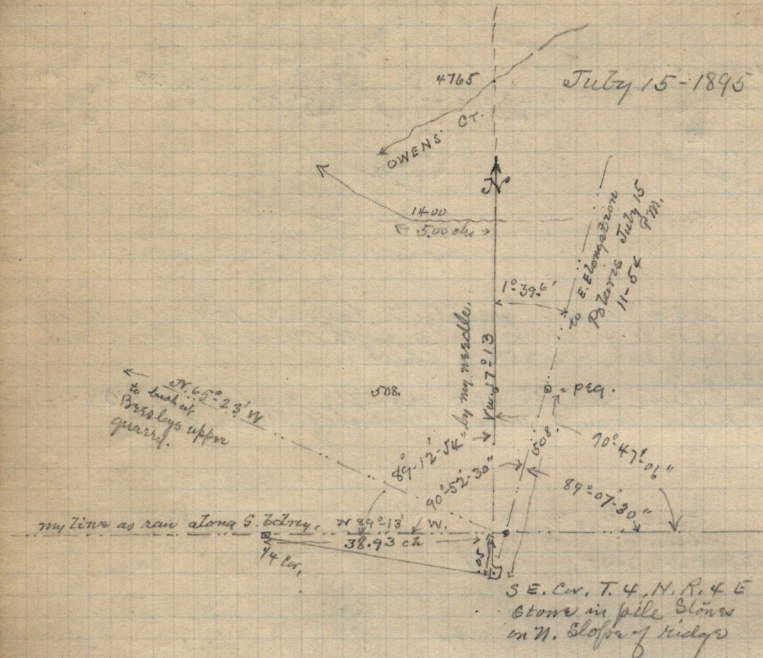


Cor to Sec 26-27-34 & 35, 14.5 ft N. of my line. land 4<sup>th</sup> rate.  
no timber. mountainous.

July 15-1896



S.E. Cor. T. 4, N. R. 4 E  
Stones in pile stones  
on N. Slope of ridge

July 16- From S. E. Cor. T. 4, N. R. 4 E. I ran N. between Sec 3  
31 & 36, descend 350 ft both corners N. along 508. ft plug on line  
at point of obs. Pol. 500. top ridge N. 45° W. 7400. descended into  
ash in brush 1000, spring branch ~~1000~~ W. abt 5 chs. and then  
N. 50° W. leave aspen brush and ascend 2540. flag on top of  
ridge E & W from which bush at Beeley's Quarry bears N 69° 16'  
or (angle of) house on my line runs W. from S. E. Cor. of  
T. 4 bears 534° 57' W. 2740 bottom runs N 80° W.  
3354. ft to flag on ridge W. 4765 Owens Creek, bears  
546° W. 57103 final Sta Stone 10 ft E.

90° 52' 30  
1.39.38  
89° 12' 54"

49° 07' 30  
1.39.36  
90° 47' 06"

